



FIRESTOP CENTRE

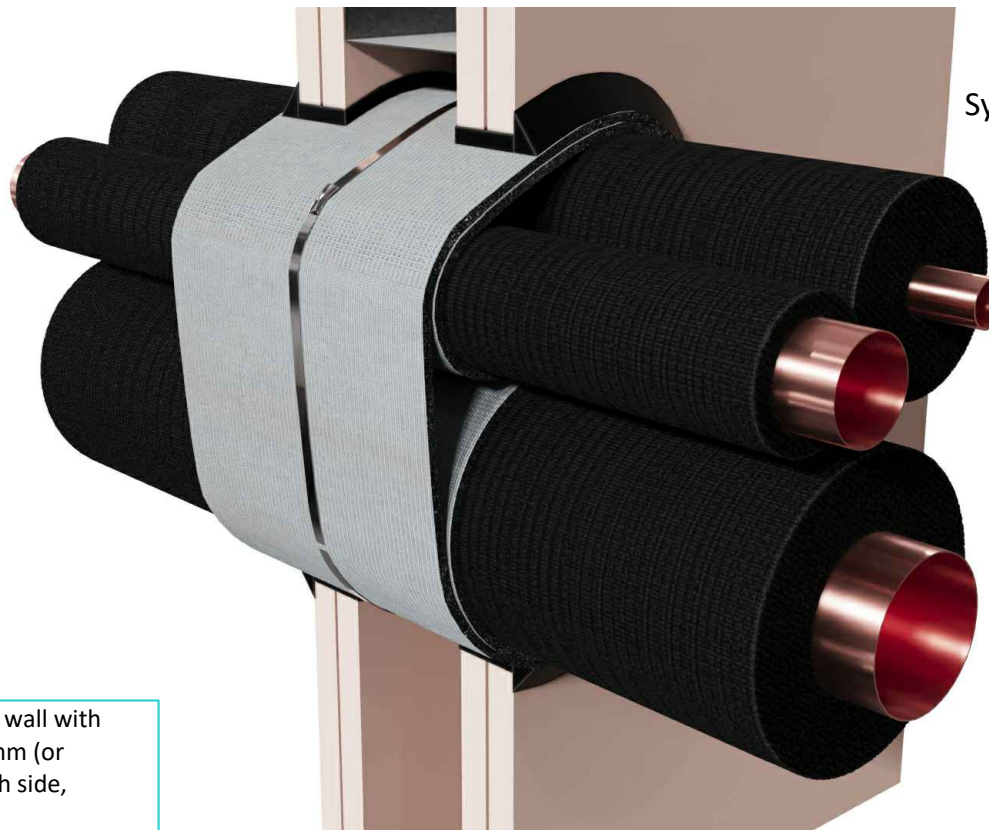
Authorised New Zealand Distributor
Ph (09) 483 4000 www.firestopcentre.co.nz

AGNI-Sleeve in 2 x 13mm Plasterboard Wall or 116mm Concrete/Masonry/Block Wall

3 x Copper Pipes (15, 32 & 50mm) with Nitrile Rubber Insulation
FRR -/120/120

Step-by-step installation instructions:

1. Wrap one revolution of a 140mm wide AGNI-Sleeve around each service.
2. Wrap one revolution of a 140mm wide AGNI-Sleeve around the bundle of three lagged pipes.
3. Insert the AGNI-Sleeves into the aperture, finishing 10mm past the lining on each side of the wall.
4. Apply 10mm (nominal) deep AGNI-Black into the gap between the AGNI-Sleeve and the lining from both sides & in all gaps within the bundle.



System ID# FC362

Technical Information

Substrate	<ul style="list-style-type: none">• Min. 64mm timber or steel stud wall with a minimum of two layers of 13mm (or greater) FR plasterboard on each side, with or without insulation.• Min. 116mm concrete wall
Service range	32mm Copper Pipe with 32mm thick nitrile rubber insulation + 15mm Copper Pipe with 25mm thick nitrile rubber insulation + 50mm Copper Pipe with 25mm thick nitrile rubber insulation
Annular gap	7.6 - 18.2mm
AGNI-Products	AGNI-Black, AGNI-Sleeve
Protection installation	From both sides of the wall

Compliance Information

Standards	AS1530.4-2014, AS4072.1-2005
FRR/FRL	-/120/120
Reference	RIRF25008



8 Clare St Bayswater
VIC 3153, AUSTRALIA
www.agnitek.com.au

Disclaimer

Agnitek reserves the right to modify product specifications without prior notice due to its ongoing research, development & certification programme. The information in this document is provided in good faith and is intended for guidance purposes only. Any accompanying drawings are solely for illustrative purposes. Since Agnitek cannot oversee installation methods or ensure site conditions, no warranties, expressed or implied, are intended regarding the products' actual performance. We do not accept liability for any loss, damage, or injury from using this information. Please take a look at the test reports displayed on a relevant AGNI-System webpage for all compliance specifics.

Date 12.05.2025



FIRESTOP CENTRE

Authorised New Zealand Distributor
Ph (09) 483 4000 www.firestopcentre.co.nz

System ID# FC362

Page 2 of 2

DN32mm Copper pipe with 32mm thick nitrile rubber insulation + DN15mm Copper pipe with 25mm thick nitrile rubber insulation + DN50mm Copper pipe with 25mm thick nitrile rubber insulation

2 layers of 13mm FR plasterboard

64 mm steel stud

AGNI-Black

AGNI-Sleeve

Technical Information

Substrate	<ul style="list-style-type: none">Min. 64mm timber or steel stud wall with a minimum of two layers of 13mm (or greater) FR plasterboard on each side, with or without insulation.Min. 116mm concrete wall
Service range	32mm Copper Pipe with 32mm thick nitrile rubber insulation + 15mm Copper Pipe with 25mm thick nitrile rubber insulation + 50mm Copper Pipe with 25mm thick nitrile rubber insulation
Annular gap	7.6 - 18.2mm
AGNI-Products	AGNI-Black, AGNI-Sleeve
Protection installation	From both sides of the wall

Compliance Information

Standards	AS1530.4-2014, AS4072.1-2005
FRR/FRL	-/120/120
Reference	RIRF25008

Disclaimer

Agnitek reserves the right to modify product specifications without prior notice due to its ongoing research, development & certification programme. The information in this document is provided in good faith and is intended for guidance purposes only. Any accompanying drawings are solely for illustrative purposes. Since Agnitek cannot oversee installation methods or ensure site conditions, no warranties, expressed or implied, are intended regarding the products' actual performance. We do not accept liability for any loss, damage, or injury from using this information. Please take a look at the test reports displayed on a relevant AGNI-System webpage for all compliance specifics.



8 Clare St Bayswater
VIC 3153, AUSTRALIA
www.agnitek.com.au

Date

12.05.2025